

Accompaniment (Eb) (Bass Clef) Zeina

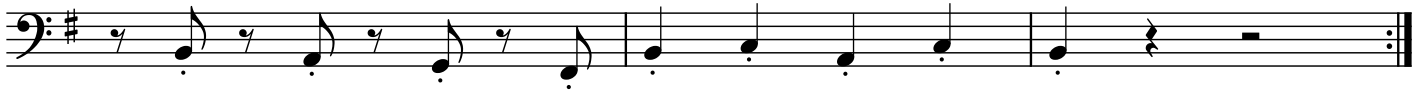
Mohammed Abdul Wahab

Intro

♩ = 180



6



9

A

A Section repeats 4X



13

B



20



25

C



32

D.S.
Only when repeating



D

♩ = 220



2

8

2.

A musical staff in bass clef with a key signature of one sharp (F#). It begins with a first ending bracket over the first two measures, followed by a repeat sign. The second ending bracket covers the next four measures, which end with a double bar line.

12 **E**

A musical staff in bass clef with a key signature of one sharp (F#). It contains five measures of music, each starting with a quarter rest followed by an eighth note, then a quarter rest followed by an eighth note, and ending with a quarter rest.

17

1. 2. rit. D.S.

A musical staff in bass clef with a key signature of one sharp (F#). It features a first ending bracket over three measures, followed by a repeat sign and a second ending bracket over two measures. The second ending concludes with a double bar line. Above the second ending, the markings "rit." and "D.S." are present.