

Melody (C)

Folk Medley

Dabke

Ya Zarif A Tul (Chorus/Melody)

DO NOT READ THIS CHART IN ORDER!
PLAY MELODY WHEN FEATURED AND ON CHORUS
PLAY ACCOMPANIMENT OTHERWISE
FORM ALTERNATES CHORUS AND FEATURE
INTERLUDE ON CUE, THEN BACK TO THE TOP

♩ = 100

3

Ya Zarif A' Tul (accompaniment)

5

7

Interlude

9 On Cue after a feature

14 Drum Break (OPEN)

CHANTS + DRUMS (malfuf)

INTRO

Loop VERSE + CHORUS

DRUMS (solo over dabke 9)

----- Repeat

Last time thru Drums play Malfuf for the break

3la Del3ouna (Intro)



3la Del3ouna (Feature)



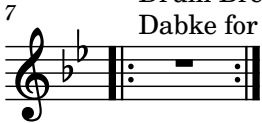
3la Del3ouna (Chorus)



Drums

Drum Break on cue after the chorus

Dabke for solos, malfuf for chants



Wein 3a Ramallah [A]



Wein 3a Ramallah [B]

