

# Folk Medley

Accompaniment (Eb) (Bass Clef)

Dabke

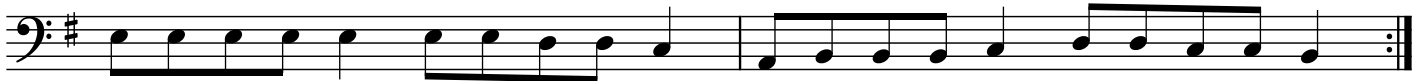
## Ya Zarif A Tul (Chorus/Melody)

DO NOT READ THIS CHART IN ORDER!  
PLAY MELODY WHEN FEATURED AND ON CHORUS  
PLAY ACCOMPANIMENT OTHERWISE  
FORM ALTERNATES CHORUS AND FEATURE  
INTERLUDE ON CUE, THEN BACK TO THE TOP

♩ = 100



3



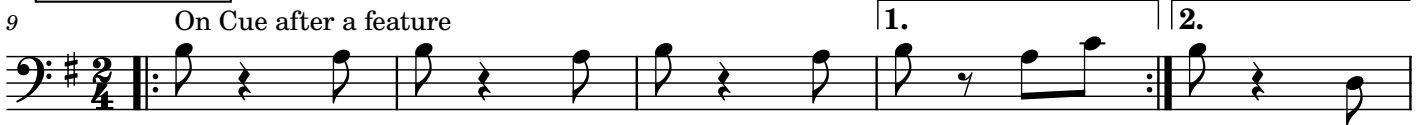
## Ya Zarif A' Tul (accompaniment)



7



## Interlude



14

Drum Break (OPEN)



CHANTS + DRUMS (malfuf)

-----

INTRO

Loop VERSE + CHORUS

DRUMS (solo over dabke 9)

----- Repeat

## 3la Del3ouna (Intro)

Last time thru Drums play Malfuf for the break



## 3la Del3ouna (Feature)

3



2

**3la Del3ouna (Chorus)**

5 Back to Chorus

Musical notation for the chorus of '3la Del3ouna'. It is written on a bass clef staff with a key signature of one sharp (F#) and a common time signature. The melody consists of a series of eighth and quarter notes, ending with a repeat sign.

**Drums**

7 Drum Break on cue after the chorus  
Dabke for solos, malfuf for chants

Musical notation for the drum part, showing a whole rest on a bass clef staff with a key signature of one sharp (F#).

**Wein 3a Ramallah [A]**

Musical notation for 'Wein 3a Ramallah [A]'. It is written on a bass clef staff with a key signature of one sharp (F#) and a 2/4 time signature. The melody includes a first ending (1.) and a second ending (2.), both marked with repeat signs.

**Wein 3a Ramallah [B]**

Musical notation for 'Wein 3a Ramallah [B]'. It is written on a bass clef staff with a key signature of one sharp (F#) and a common time signature. The melody consists of a sequence of eighth and quarter notes.