

# Folk Medley

Dabke

DO NOT READ THIS CHART IN ORDER!  
 PLAY MELODY WHEN FEATURED AND ON CHORUS  
 PLAY ACCOMPANIMENT OTHERWISE  
 FORM ALTERNATES CHORUS AND FEATURE  
 INTERLUDE ON CUE, THEN BACK TO THE TOP

## Ya Zarif A Tul (Chorus/Melody)

♩ = 100

3

## Ya Zarif A' Tul (accompaniment)

5

7

## Interlude

9 On Cue after a feature

14

Drum Break (OPEN)

CHANTS + DRUMS (malfuf)

-----  
INTRO

Loop VERSE + CHORUS

DRUMS (solo over dabke 9)

----- Repeat

Last time thru Drums play Malfuf for the break

**3la Del3ouna (Intro)**



**3la Del3ouna (Feature)**



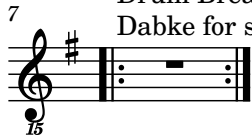
**3la Del3ouna (Chorus)**



**Drums**

Drum Break on cue after the chorus

Dabke for solos, malfuf for chants



**Wein 3a Ramallah [A]**



**Wein 3a Ramallah [B]**

