

Bass (C)

Bahlam Beek

Abdel Halim Hafez

Intro

Musical notation for the Intro section, consisting of four measures of eighth notes in a 4/4 time signature.

Melody

5

Musical notation for the first staff of the Melody section, starting at measure 5.

9

Musical notation for the second staff of the Melody section, starting at measure 9.

13

Musical notation for the third staff of the Melody section, starting at measure 13.

17

Musical notation for the fourth staff of the Melody section, starting at measure 17, featuring repeat signs.

21

Musical notation for the fifth staff of the Melody section, starting at measure 21.

25

Musical notation for the sixth staff of the Melody section, starting at measure 25.

29

Musical notation for the seventh staff of the Melody section, starting at measure 29.

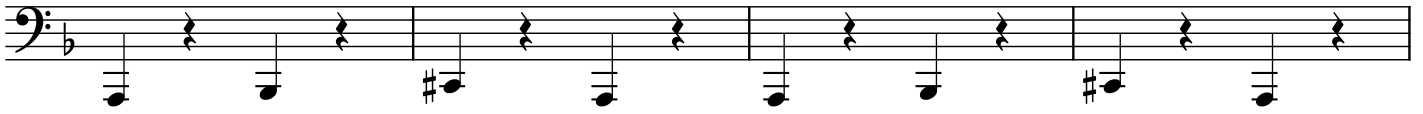
33

Musical notation for the eighth staff of the Melody section, starting at measure 33, featuring repeat signs.

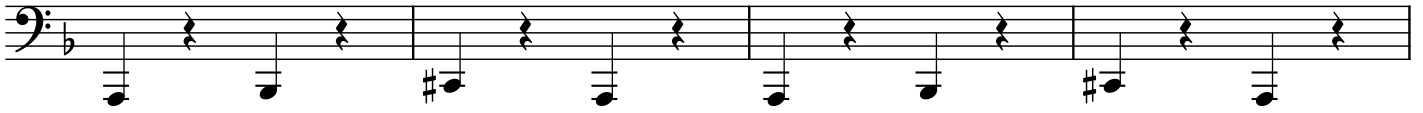
2

Vocals

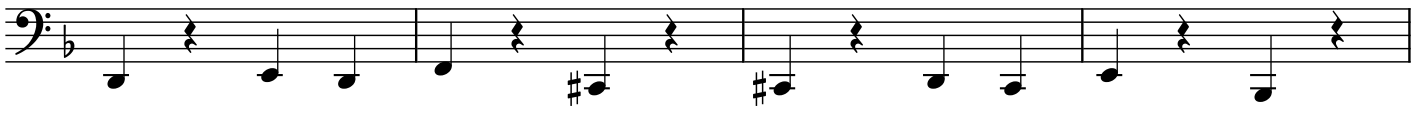
37



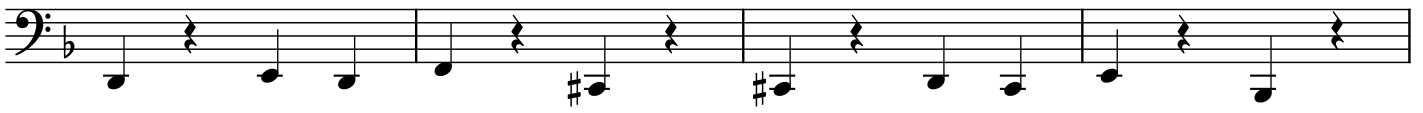
41



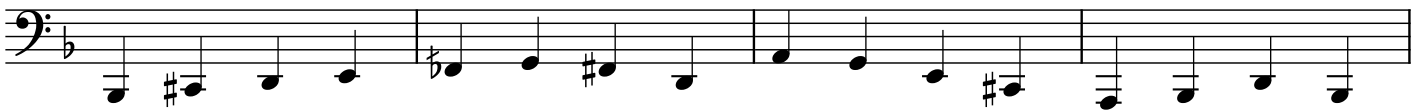
45



49



53



57

